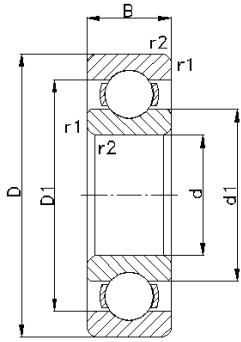
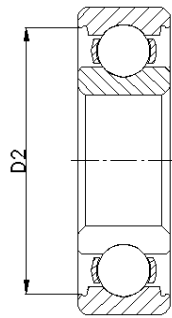


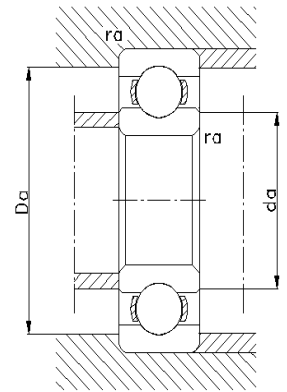
Deep groove ball bearings single row



with full outer ring shoulders



with recessed outer ring shoulders



d	Principal dimensions			Basic load ratings		Fatigue load limit P_u	Speed ratings lubrication grease	oil	Mass	Dimensions				Abutment and fillet dimensions			Designations
	D	B	C	Dynamic	static					d_1	D_1	D_2	$r_{1,2}$	d_a	D_a	r_a	
mm	N			N	r/min	kg	\approx	\approx	\approx	min	max	max	---				
12	32	10	6890	3100	132	22000	28000	0.037	18.2	25.9	27.4	0.6	16	28	0.6	6201	
	37	12	9750	4150	176	19000	24000	0.060	19.5	29.7	31.5	1	17	32	1	6301	
15	35	11	7800	3750	160	19000	24000	0.045	21.5	29.2	30.4	0.6	19	31	0.6	6202	
	42	13	11400	5400	228	17000	20000	0.082	23.7	33.9	36.3	1	20	37	1	6302	
17	40	12	9560	4750	200	17000	20000	0.065	24.2	32.9	35	0.6	21	36	0.6	6203	
	47	14	13500	6550	275	16000	19000	0.12	26.5	37.6	39.6	1	22	42	1	6303	
20	47	14	12700	6550	280	15000	18000	0.11	28.5	38.7	40.6	1	25	42	1	6204	
	52	15	15900	7800	335	13000	16000	0.14	30.3	42.1	44.8	1.1	26.5	45.5	1	6304	
25	52	15	14000	7800	335	12000	15000	0.13	34	44.2	46.3	1	30	47	1	6205	
	62	17	22500	11600	490	11000	14000	0.23	36.6	50.9	52.7	1.1	31.5	55.5	1	6305	
30	62	16	19500	11200	475	10000	13000	0.20	40.3	52.1	54.1	1	35	57	1	6206	
	72	19	28100	16000	670	9000	11000	0.35	44.6	59.9	61.9	1.1	36.5	65.5	1	6306	
35	72	17	25500	15300	655	9000	11000	0.29	46.9	60.6	62.7	1.1	41.5	65.5	1	6207	
	80	21	33200	19000	815	8500	10000	0.46	49.5	66.1	69.2	1.5	43	72	1.5	6307	
40	80	18	30700	19000	800	8500	10000	0.37	52.6	67.9	69.8	1.1	46.5	73.5	1	6208	
	90	23	41000	24000	1020	7500	9000	0.63	56.1	74.7	77.7	1.5	48	82	1.5	6308	
45	85	19	33200	21600	915	7500	9000	0.41	57.6	72.9	75.2	1.1	51.5	78.5	1	6209	
	100	25	52700	31500	1340	6700	8000	0.83	62.1	83.7	86.7	1.5	53	92	1.5	6309	
50	90	20	35100	23200	980	7000	8500	0.46	62.5	78.1	81.7	1.1	56.5	83.5	1	6210	
55	90	18	28100	21200	900	7500	9000	0.39	66.3	79.1	81.5	1.1	61.5	83.5	1	6011	
	100	21	43600	29000	1250	6300	7500	0.61	69	86.6	89.4	1.5	63	92	1.5	6211	



Factory: Tabriz- West Industrial Town
Iranian Bearing Co.

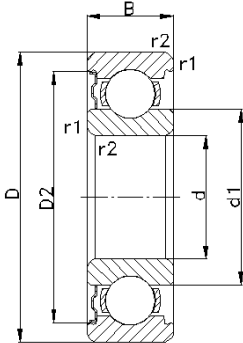
Postal Code: 5197713636

Tel : 041-34451031-3

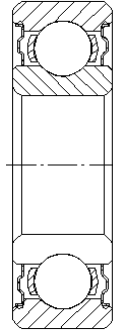
Fax : 041-34451034

Sales Dep.: 041-34452455

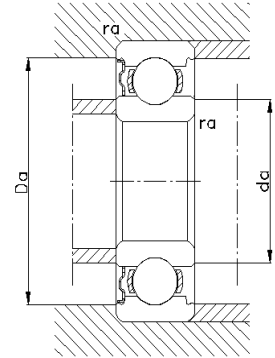
Deep groove ball bearings single row, with shield(s)



with one Z shield

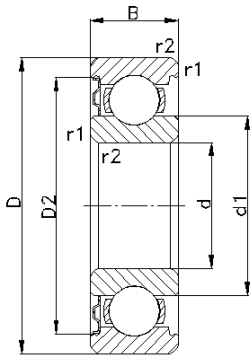


with two Z shield

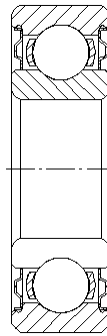


d	Principal dimensions			Basic load ratings		Fatigue load limit P_u	Speed ratings		Mass	Dimensions			Abutment and fillet dimensions			Designations	
	D	B	C	Dynamic	static		lubrication	oil		d_1	D_2	$r_{1,2}$	d_a	D_a	r_a	One shield	Two shields
mm	mm	mm	N	N	N	r/min		kg	≈	≈	min	min	max	max	mm	---	
12	32	10	6890	3100	132	22000	28000	0.037	18.2	27.4	0.6	16	28	0.6	6201-Z	6201-2Z	
	37	12	9750	4150	176	19000	24000	0.060	19.5	31.5	1	17	32	1	6301-Z	6301-2Z	
15	35	11	7800	3750	160	19000	24000	0.045	21.5	30.4	0.6	19	31	0.6	6202-Z	6202-2Z	
	42	13	11400	5400	228	17000	20000	0.082	23.7	36.3	1	20	37	1	6302-Z	6302-2Z	
17	40	12	9560	4750	200	17000	20000	0.065	24.2	35	0.6	21	36	0.6	6203-Z	6203-2Z	
	47	14	13500	6550	275	16000	19000	0.12	26.5	39.6	1	22	42	1	6303-Z	6303-2Z	
20	47	14	12700	6550	280	15000	18000	0.11	28.5	40.6	1	25	42	1	6204-Z	6204-2Z	
	52	15	15900	7800	335	13000	16000	0.14	30.3	44.8	1.1	26.5	45.5	1	6304-Z	6304-2Z	
25	52	15	14000	7800	335	12000	15000	0.13	34	46.3	1	30	47	1	6205-Z	6205-2Z	
	62	17	22500	11600	490	11000	14000	0.23	36.6	52.7	1.1	31.5	55.5	1	6305-Z	6305-2Z	
30	62	16	19500	11200	475	10000	13000	0.20	40.3	54.1	1	35	57	1	6206-Z	6206-2Z	
	72	19	28100	16000	670	9000	11000	0.35	44.6	61.9	1.1	36.5	65.5	1	6306-Z	6306-2Z	
35	72	17	25500	15300	655	9000	11000	0.29	46.9	62.7	1.1	41.5	65.5	1	6207-Z	6207-2Z	
	80	21	33200	19000	815	8500	10000	0.46	49.5	69.2	1.5	43	72	1.5	6307-Z	6307-2Z	
40	80	18	30700	19000	800	8500	10000	0.37	52.6	69.8	1.1	46.5	73.5	1	6208-Z	6208-2Z	
	90	23	41000	24000	1020	7500	9000	0.63	56.1	77.7	1.5	48	82	1.5	6308-Z	6308-2Z	
45	85	19	33200	21600	915	7500	9000	0.41	57.6	75.2	1.1	51.5	78.5	1	6209-Z	6209-2Z	
	100	25	52700	31500	1340	6700	8000	0.83	62.1	86.7	1.5	53	92	1.5	6309-Z	6309-2Z	
50	90	20	35100	23200	980	7000	8500	0.46	62.5	81.7	1.1	56.5	83.5	1	6210-Z	6210-2Z	
55	90	18	28100	21200	900	7500	9000	0.39	66.3	81.5	1.1	61.5	83.5	1	6011-Z	6011-2Z	
	100	21	43600	29000	1250	6300	7500	0.61	69	89.4	1.5	63	92	1.5	6211-Z	6211-2Z	

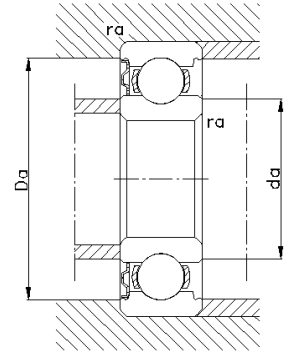
Deep groove ball bearings single row, with seal(s)



with one RS1 seal



with two RS1 seals



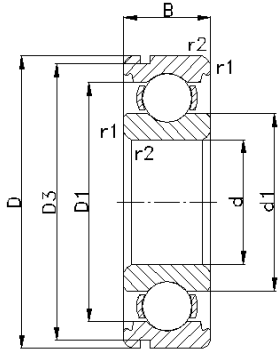
d	Principal dimensions			Basic load ratings		Fatigue load limit P_u	Speed ratings	Mass	Dimensions		Abutment and fillet dimensions				Designations		
	D	B	C	Dynamic	static				d_1	D_2	$r_{1,2}$	d_a	d_a	D_a	r_a	Bearings with One seal	Two seals
mm			N	N	N	r/min	kg	≈	≈	min	min	max	max	max	mm	---	
12	32	10	6890	3100	132	15000	0.037	16.1	27.4	0.6	16	16	28	0.6	6201-RS1	6201-2RS1	
	37	12	9750	4150	176	14000	0.060	17.3	31.5	1	17	17	32	1	6301-RS1	6301-2RS1	
15	35	11	7800	3750	160	13000	0.045	19.2	30.4	0.6	19	19	31	0.6	6202-RS1	6202-2RS1	
	42	13	11400	5400	228	12000	0.082	21	36.6	1	20	20.5	37	1	6302-RS1	6302-2RS1	
17	40	12	9560	4750	200	12000	0.065	21.6	35	0.6	21	21	36	0.6	6203-RS1	6203-2RS1	
	47	14	13500	6550	275	11000	0.12	23.9	39.6	1	22	23.5	42	1	6303-RS1	6303-2RS1	
20	47	14	12700	6550	280	10000	0.11	26	40.6	1	25	25.5	42	1	6204-RS1	6204-2RS1	
	52	15	15900	7800	335	9500	0.14	27.1	44.8	1.1	26.5	27	45.5	1	6304-RS1	6304-2RS1	
22	50	14	14000	7650	325	30000	0.12	32.2	44	1	27.6	27.6	44.4	1	62/22-RS1	62/22-2RS1	
25	52	15	14000	7800	335	8500	0.13	31.4	46.3	1	30	31	47	1	6205-RS1	6205-2RS1	
	62	17	22500	11600	490	7500	0.23	33.9	52.7	1.1	31.5	33.5	55.5	1	6305-RS1	6305-2RS1	
30	62	16	19500	11200	475	7500	0.20	37.6	54.1	1	35	37	57	1	6206-RS1	6206-2RS1	
	72	19	28100	16000	670	6300	0.35	41.7	61.9	1.1	36.5	41.5	65.5	1	6306-RS1	6306-2RS1	
35	72	17	25500	15300	655	6300	0.29	44	62.7	1.1	41.5	43.5	65.5	1	6207-RS1	6207-2RS1	
	80	21	33200	19000	815	6000	0.46	44.6	69.2	1.5	43	44	72	1.5	6307-RS1	6307-2RS1	
40	80	18	30700	19000	800	5600	0.37	50	69.8	1.1	46.5	49.5	73.5	1	6208-RS1	6208-2RS1	
	90	23	41000	24000	1020	5000	0.63	51	77.7	1.5	48	50.5	82	1.5	6308-RS1	6308-2RS1	
45	85	19	33200	21600	915	5000	0.41	54.5	75.5	1.1	51.5	54	78.5	1	6209-RS1	6209-2RS1	
	100	25	52700	31500	1340	4500	0.83	57	86.7	1.5	53	56.5	92	1.5	6309-RS1	6309-2RS1	
50	90	20	35100	23200	980	4800	0.46	58.8	81.7	1.1	56.5	58	83.5	1	6210-RS1	6210-2RS1	
55	90	18	28100	21200	900	4500	0.39	62.5	81.5	1.1	61.5	62	83.5	1	6011-RS1	6011-2RS1	
	100	21	43600	29000	1250	4300	0.61	65.5	89.4	1.5	63	65	92	1.5	6211-RS1	6211-2RS1	

Steel balls

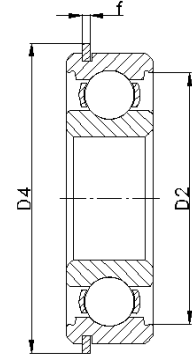
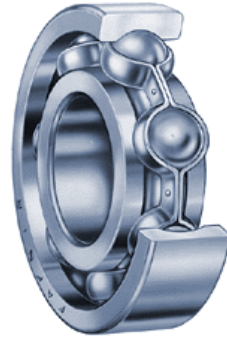
Item	Designations	Diameter Nominal		Weight 1000Pcs.=Kgr.	Finished Balls 1Kg.=Qty.
		In.	mm		
1	RB-4.762	3/16	4.762	0.444	2252
2	RB-6		6.000	0.887	1127
3	RB-6.747	17/64	6.747	1.262	792
4	RB-7.144	9/32	7.144	1.498	668
5	RB-7.938	5/16	7.938	2.055	487
6	RB-8.731	11/32	8.731	2.735	366
7	RB-9.525	3/8	9.525	3.552	282
8	RB-11.112	7/16	11.112	5.640	177

Item	Designations	Diameter Nominal		Weight 1000Pcs.=Kgr.	Finished Balls 1Kg.=Qty.
		In.	mm		
9	RB-11.5		11.500	6.250	160
10	RB-12.303	31/64	12.303	7.651	131
11	RB-12.7	1/2	12.700	8.415	119
12	RB-13.49	17/32	13.494	10.094	99
13	RB-14.288	9/16	14.288	11.982	83
14	RB-15.081	19/32	15.081	14.092	71
15	RB-17.462	11/16	17.462	21.876	46

Deep groove ball bearings single row, with snap ring groove



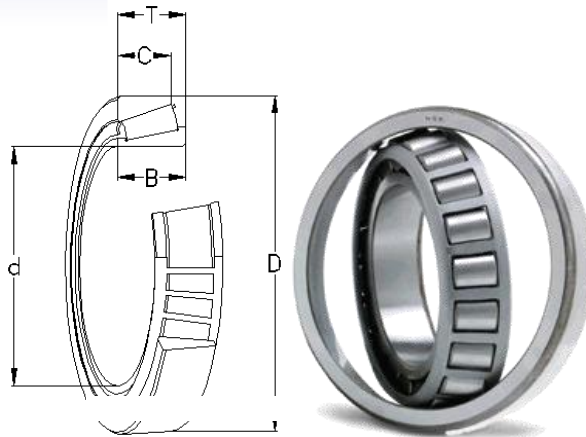
with snap ring groove in outer ring



with snap ring groove and snap ring in outer ring

d mm	Principal dimensions		Basic load ratings		Fatigue load limit P_u N	Speed ratings		Mass kg	Dimensions					f mm	$r_{1,2}$ min	Designations Bearings with Snap ring groove	Snap ring groove and snap ring
	D	B	dynamic N	static C_0		lubrication grease	oil		d_1 ≈	D_1 ≈	D_2 ≈	D_3	D_4 max				
17	40	12	9560	4750	200	17000	20000	0.065	24.2	32.9	35	38.1	44.6	1.12	0.6	6203N	6203NR
	47	14	13500	6550	275	16000	19000	0.12	26.5	37.6	39.6	44.6	52.7	1.12	1	6303N	6303NR
20	47	14	12700	6550	280	15000	18000	0.11	28.5	38.7	40.6	44.6	52.7	1.12	1	6204N	6204NR
	52	15	15900	7800	335	13000	16000	0.14	30.3	42.1	44.8	49.73	57.9	1.12	1.1	6304N	6304NR
25	52	15	14000	7800	335	12000	15000	0.13	34	44.2	46.3	49.73	57.9	1.12	1	6205N	6205NR
	62	17	22500	11600	490	11000	14000	0.23	36.6	50.9	52.7	59.61	67.7	1.7	1.1	6305N	6305NR
30	62	16	19500	11200	475	10000	13000	0.20	40.3	52.1	54.1	59.61	67.7	1.7	1	6206N	6206NR
	72	19	28100	16000	670	9000	11000	0.35	44.6	59.9	61.9	68.81	78.6	1.7	1.1	6306N	6306NR
35	72	17	25500	15300	655	9000	11000	0.29	46.9	60.6	62.7	68.81	78.6	1.7	1	6207N	6207NR
	80	21	33200	19000	815	8500	10000	0.46	49.5	66.1	69.2	76.81	86.6	1.7	1.5	6307N	6307NR
40	80	18	30700	19000	800	8500	10000	0.37	52.6	67.9	69.8	76.81	86.6	1.7	1.1	6208N	6208NR
	90	23	41000	24000	1020	7500	9000	0.63	56.1	74.7	77.7	86.79	96.5	2.46	1.5	6308N	6308NR
45	85	19	33200	21600	915	7500	9000	0.41	57.6	72.9	75.2	81.81	91.6	1.7	1.1	6209N	6209NR
	100	25	52700	31500	1340	6700	8000	0.83	62.1	83.7	86.7	96.8	106.5	2.46	1.5	6309N	6309NR
50	90	20	35100	23200	980	7000	8500	0.46	62.5	78.1	81.7	86.79	96.5	2.46	1.1	6210N	6210NR
	90	18	28100	21200	900	7500	9000	0.39	66.3	79.1	81.5	86.79	96.5	2.46	1.1	6011N	6011NR
55	100	21	43600	29000	1250	6300	7500	0.61	69	86.6	89.4	96.8	106.5	2.46	1.5	6211N	6211NR

Taper roller bearings

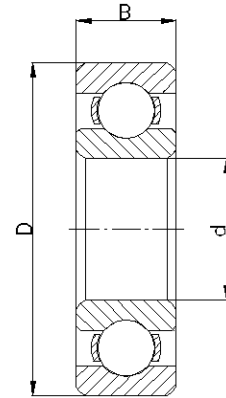


dimensions					Basic load ratings dynamic static		Fatigue load limit	Speed ratings		Mass	Designation	Series
d	B	D	C	T	C	C ₀	P _U	Reference speed	Limiting speed			
mm					N		N	r/min		kg		
17.462	14.605	39.878	16.668	13.843	24500	20800	2120	15000	20000	0.081	K-LM11749/KLM11710	LM11700
19.050	16.637	45.237	12.065	15.494	31500	27500	29000	13000	18000	0.12	K-LM11949/K-LM11910	LM11900
21.430	17.788	50.005	13.47	17.026	42500	38000	4150	12000	16000	0.17	M12649/610	M12600
25.400	19.431	57.150	14.732	19.431	45500	45000	5000	10000	13000	0.23	K-M84548/K-M84510	M84500
26.988	14.732	50.292	10.668	14.224	30000	30000	3050	11000	15000	0.11	K-L44649/K-L44610	L44600
31.750	16.764	59.131	11.811	15.875	40000	41500	4400	9500	12000	0.18	K-LM67048/K-LM67010	LM67000
33.338	22.225	68.262	17.462	22.225	63000	69500	7800	8000	11000	0.38	K-M88048/K-M88011	M88000
34.925	18.288	65.088	13.970	18.034	54000	57000	6200	8500	11000	0.25	LM 48548/10	LM48500
34.988	16.764	59.131	11.938	15.875	38000	44000	4500	9000	12000	0.17	K-L68149/K-L68110	L68100
38.000	17.000	63.000	13.550	17.000	42500	52000	5400	8500	11000	0.2	JL 69349/JL 69310	L69300
38.000	17.000	63.000	13.550	17.000	42500	52000	5400	8500	11000	0.2	JL 69349A/JL 69310	L69300A
41.275	19.812	73.431	14.732	19.558	63000	68000	7650	7500	10000	0.33	K-LM501349/K-LM501310	LM501300
44.45	28.575	95.25	22.225	30.958	116000	122000	14000	5300	7000	0.97	HM903249/10	HM903200
66.675	21.996	110	18.87	22	142000	204000	24000	4300	6300	0.77	395A/394A	395A/394A
82.55	25.4	125.412	19.845	25.4	187000	280000	32500	3400	5000	0.34	27687/20	27687/20
20	14	47	12	15.25	28000	27000	2700	13000	16000	0.97	30204 J2/Q	30204
25	15	47	11.5	15	31000	32500	3250	12000	14000	0.11	32005 U2	32005
30	16	62	14	17.25	46500	44000	4800	9000	11000	0.23	30206 J2/Q	30206
30	20	62	17	21.25	58500	57000	6300	9000	11000	0.28	32206	32206

Special products

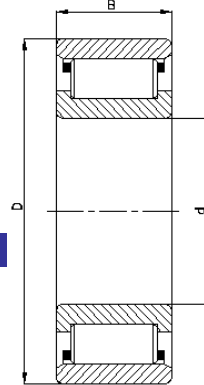
IBC is also producer of special bearings in normal tolerances for automotive industries as below:

Item	Principal Dimensions (mm)			Designations
	d	D	B	
1	30	72	28	411280
2	30	72	19	402082
3	19.05	57.15	14.29	412040-2Z
4	38.7	104.2	34.56	429008
5	30	55	13	6006
6	25	75	17	AB-40559



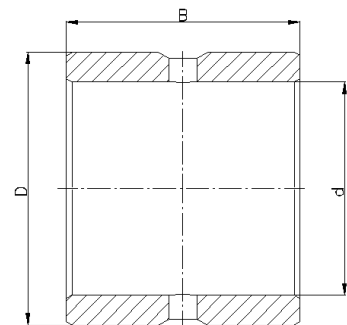
Cylindrical roller bearing for automotive industries as below:

Item	Principal Dimensions (mm)			Designations
	d	D	B	
1	36	72	19.47	N 41627 H300



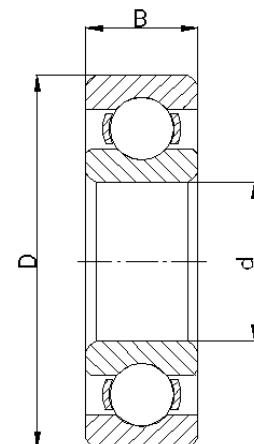
IBC is also producer of special bushes for automotive industries as below:

Item	Principal Dimensions (mm)			Designations
	d	D	B	
1	25.043	32	27.275	4th & 5th drive gear bush
2	28.4	35.8	30.785	Second drive gear bush
3	35	40	35	Driver gear bush (T3535)
4	25.05	38.8	5.1	Spacing washer



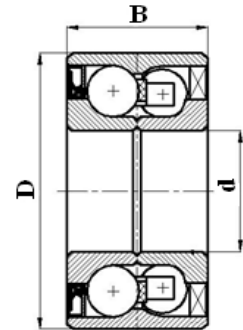
IBC is also producer of special bearing for oil industry as below:

Item	Principal Dimensions (mm)			Designations
	d	D	B	
1	47.625	110	66.05	NAA310-30 (Y-Bearing)



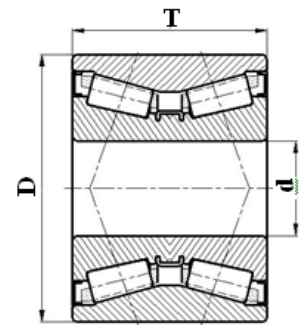
Double row Deep Groove Ball bearing

Item	Principal Dimensions (mm)			Designations
	d	D	B	
1	42	82	36	446047
2	37	72	33	BAH 0051 B
3	35	65	35	443952



Double row Taper roller bearing

Item	Principal Dimensions (mm)			Designations
	d	D	B	
1	25	52	37	445539
2	35	65	35	445620



Factory: Tabriz- West Industrial Town
Iranian Bearing Co.

Postal Code: 5197713636

Tel : 041-34451031-3

Fax : 041-34451034

Sales Dep.: 041-34452455

Web site: www.ibct.ir

E-mail: info@ibct.ir